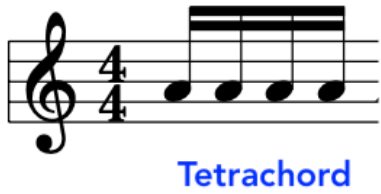


# HEXATONICS:

4 note grouping



6 note grouping



Exercise 1:

The first system of Exercise 1. The top staff is in 9/8 time and features a melodic line with sixteenth notes and accents (v) over the first, third, and fifth notes. The bottom staff is guitar tablature with fret numbers 12, 8, 10, 9, 10, 9, 10, 8, 10, 8, 15, 10, 12, 10, 12, 8. The word "etc." is written above the melodic line.

The second system of Exercise 1. The top staff continues the melodic line. A blue bracket highlights a sixteenth-note arpeggio figure. The bottom staff is guitar tablature with fret numbers 8, 5, 7, 5, 6, 5, 7, 4, 5, 4, 5, 7, 5, 2, 3, 2, 3, 0. The word "Arpeggio" is written in blue below the highlighted figure.

# Exercise 2:

9/8 v etc.

9/8

5 2 3 2 3 2 7 5 7 5 6 5 12 8 10 8 10 8

v v v v v v

15 12 13 12 15 12 20 15 17 15 17 15 17

# Variation:

9/8 v etc.

9/8

5 2 3 2 3 2 7 5 7 5 6 5 12 8 10 8 10 8

v v v v v v

16 12 14 12 14 12 17 14 15 14 15 14 17

VARIATION/Connections

# Exercise 3:

9/8

etc.

TAB 9/8

17 12 13 12 13 10 10 7 8 7 10 6 9 7 9 7 8 7

v p v p v p

9/8

etc.

TAB 9/8

7 5 4 5 3 7 5 3 2 3 2 0 5 3 2 3 1 0 0

v p v p